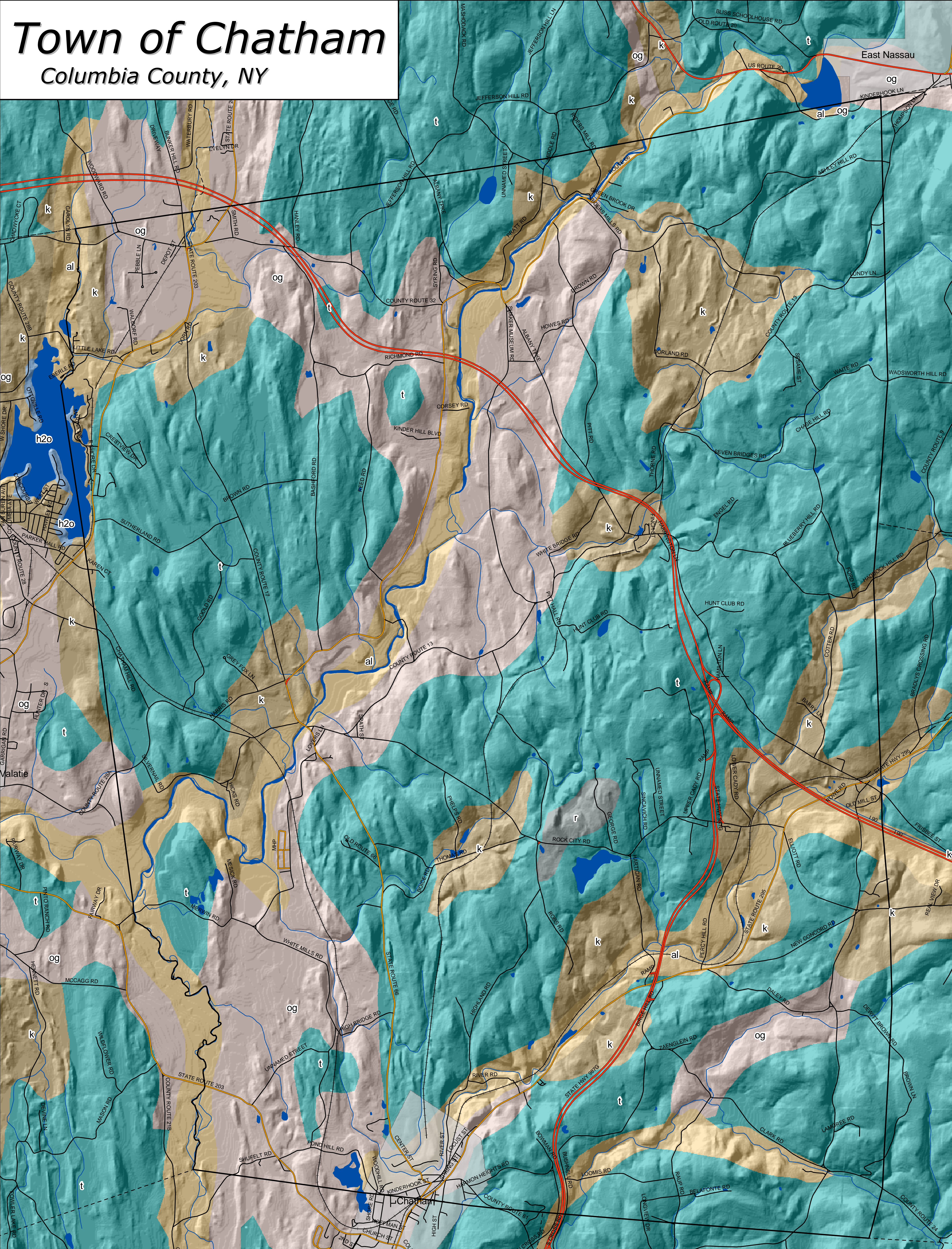


# Town of Chatham

Columbia County, NY



## Surficial Geology

- Town Boundary

Village Boundaries

Water Features

Streams
- SurficialGeology

Till: Deposition beneath the ice

t - Till Variable texture (boulders to silt),

Fluvial: Stream Deposition

al - Recent alluvium
- Glaciofluvial:

Stream deposition adjacent or in front of the ice

og - Outwash sand and gravel

k - Kame deposits

Other

h2o - Water

r - Bedrock



Community Planning &  
Environmental Associates

Nan Stolzenburg, AICP - [www.planningbetterplaces.com](http://www.planningbetterplaces.com)  
152 Stolzenburg Road, Berne, NY 12023  
Don Meltz, Planning and GIS - [www.donmeltz.com](http://www.donmeltz.com)